

# WeCreat

# WeCreat

---

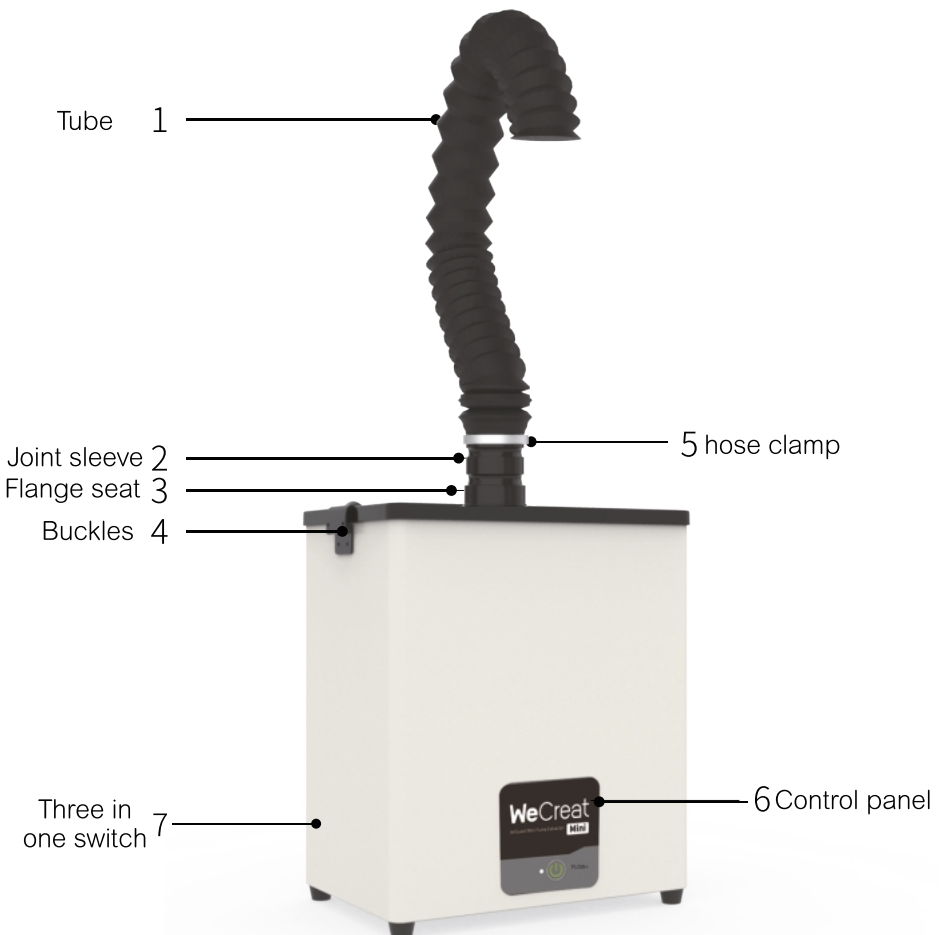
## SMOKE PURIFIER USER MANUAL

---



# Product Preview

This product is suitable for all places where there is smoke, odors, dust, and harmful gases. It can be used in industries such as laser fields, electronics, and precision hardware. The product features a variable design and multiple layers of filtering devices, allowing for adjustment of the air volume based on the amount of exhaust gas generated. It effectively absorbs and filters with a purification rate of up to 99.97%. The purified clean air can be directly released indoors.



# Specifications

Model	PP2403
Inert interface(mm)	Φ65
Input voltage(v)	120
Max power(w)	150
Wind speed (M/S)	21
Filtration Efficiency(μm)	0.3 (99.97%)
Smoking pipe(m)	1.5meter flexible hose
System flow rate(m³/h)	280
Idle speed(r/min)	4500
Negative pressure(Pa)	3000
Number of filtration Layer	1
Filter configuration	one-piece cartridge
Device Dimensions(mm)	330*215*375
Device Weight(kg)	8

# After sales service warranty

Warranty for Goods during the Warranty Period (Free Repairs) shall be implemented from the date of purchase.

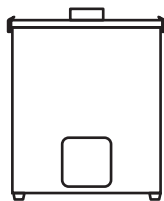
1.The main unit is covered by a one-year warranty starting from the date of purchase. (Note: Consumables such as filter cartridges are not included in the warranty coverage.)

2.The following situations are not eligible for warranty service, but can be subject to chargeable repairs:

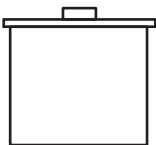
- a. Damages caused by not using, maintaining, or storing the product according to the requirements specified in the operation manual.
- b. Losses caused by improper operation, abnormal voltage, or accidental dropping.
- c. Damages caused by unauthorized disassembly of the machine without the manufacturer's consent.
- d. Inability to prove that the machine is within the valid warranty period.
- e. Damages caused by nuclear reactions or chemical corrosion.
- f. Damages caused by uncontrollable factors such as lightning, earthquakes, floods, fires, and other natural disasters.

# Notice to user

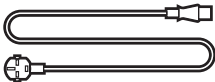
Dear User: For your safety, please pay attention to the following:



1 host



1 one-piece cartridge



1 power cord



1 hose



1 bamboo  
pipe sleeve



2 hose clamp



1 screwdriver



1 user manual

Pre-check	Security profile
Check if there is any damage	Not intended for use above 60°C/140°F, flammable, explosive or liquids environments
If the power is off	Power cable must be grounded
If the filter inside placed flat	The internal voltage can reach up to 310V. Prohibited from opening the back panel for inspection or repair work
If the flange seat closed fully	Do not remove filter while device is operating



# Device Usage Precautions

- The power of the machine should be used as indicated by the power label on the machine. Never use the machine when the voltage is too high or too low. If the voltage in the operating environment is found to be unstable, please turn off the machine and unplug the power until the voltage stabilizes.
- When using the machine, the temperature of the gas or dust sucked in through the air inlet should be from normal temperature to 50°C/122°F. It is prohibited to use the machine at temperatures higher or lower.
- When using the machine, the humidity of the gas or dust sucked in through the air inlet should be within 40% to 80%. High humidity can cause the filter cartridge to fail quickly and damage the internal circuits of the machine.
- It is strictly prohibited to continue using the machine after the filter cartridge is severely clogged. This will greatly shorten the lifespan of the machine and may even cause damage. Regular cleaning and maintenance of the machine, as well as regular replacement of the filter cartridge, are necessary to ensure the machine works in good condition.

## **Please replace it with an original factory-configured filter**

It is strictly prohibited to open the machine's internal parts for repairs without authorization. The warranty sticker on the machine is the sole proof required for you to avail of our after-sales service. Please do not remove or damage the warranty sticker on the machine.

# Operating instructions


Step 1: Insert the joint sleeve into the flange on the top cover, then connect the hose to the top end of the joint. Secure it with a hose clamp. Connect the other end of the hose to the inlet of the device that needs purification and tighten it with a hose clamp.

Note: When adjusting the position of the smoke pipe, try to maintain a smooth and gentle bend in the pipe, as it may affect the suction power.

Note: Avoid using it in areas with strong air flow to prevent a decrease or loss of suction power. Adjust the length of the pipe appropriately; the longer the pipe, the lower the suction power, and vice versa.

Step 2: Connect the power cord and check if the power plug is stable and secure.

## Digital display panel

 **Attention Sound and Light Alarm:** When the dust capacity of the filter reaches saturation, the machine will enter the alarm state. The buzzer will sound, and the left red indicator light will flash as a warning. You need to check the usage condition of the filter. If the suction power is insufficient, you need to replace the filter. If the filter has not reached saturation, press and hold the settings key to increase the value until the alarm sound is cleared.



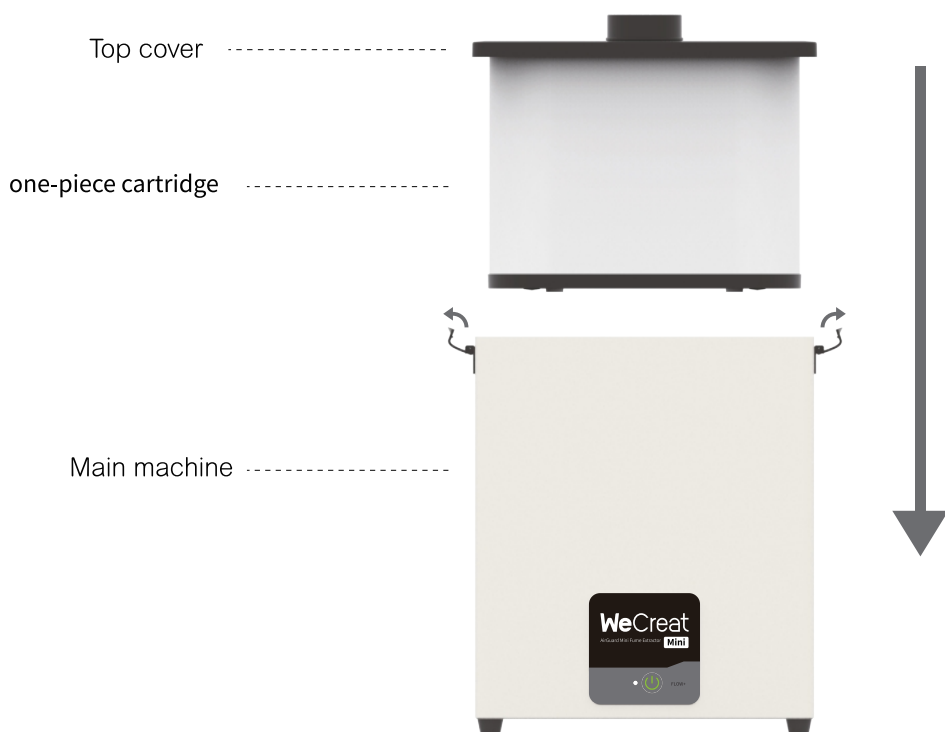
### **Keys operation**

- First time press to start machine at low gear
- Second time press to start machine at middle gear
- Third time press to start machine at high gear
- Fourth time press to power off



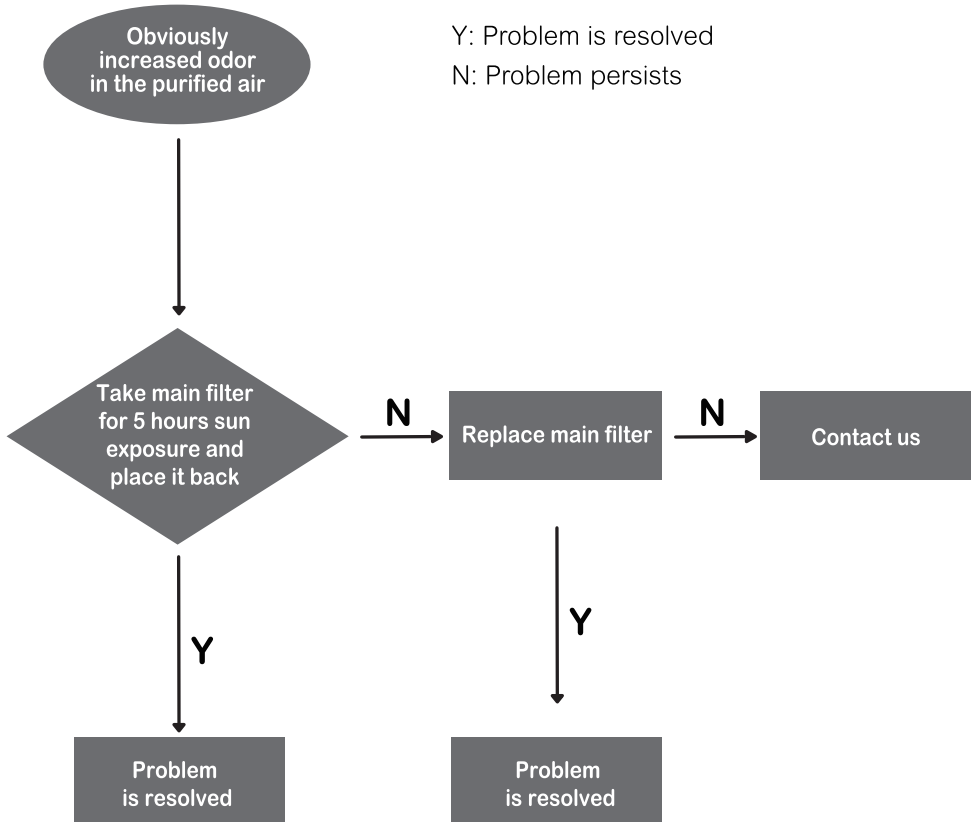
# Installation instruction

Unlock the side buckle of the primary Machine and extract the Top cover. The arrangement of the filter components is Pre-filter, Medium Filter and Main Filter. Withdraw and swap the targeted filter element before reintegrating the assembly as depicted.



# Check and Replacement

## Check and replace the main filter:



# Replacement and Maintenance

Note: It is prohibited to use the smoke purifier without installing filters or using low-quality filters available in the market. In such cases, the equipment is not covered under warranty. Please regularly replace the filters with WeCreat and ensure they are properly installed in the correct order. This will help prevent any further damage or losses on your part.

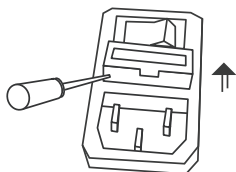


Required items:

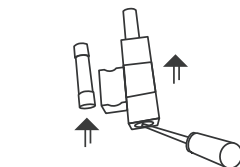
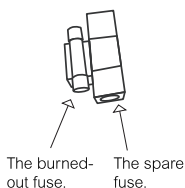
1. Should fix time to renew the filter core to make ensure the machine working under better status. Please must cut off the power supply first before renewal and maintain the filter system! \*Must use the original filter core, otherwise, our company will not undertake any responsibility for the machine failure caused by this!
2. Bamboo pipe need be fix time cleaned, to avoid that too quick filter core blocks.
3. Check whether the filter canister need be renewal when absorb force reducing.
4. Need clearly marked the renewal date after renewal the new filter canister.
5. Should be hands support around side frame when install and disassemble the filter canister, slowly place in and pick out, can't use head or hand jack the internal filter core when transporting, to avoid the filter materials deformation or damage, and affect the filter effect;

# Fuse replacement

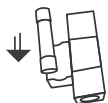
If the device emits a beep sound, first check if the adjustment valve is fully open, and then check if the indicator light of the three-in-one switch is not lit. If it is not lit, it indicates that there is no problem with the circuit and it may be due to a blown fuse.



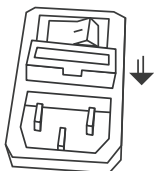
First, turn off the power. Then, use a screwdriver to pry out the fuse slot.



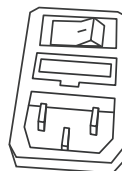
Remove the faulty fuse and use a screwdriver to take out the spare fuse.



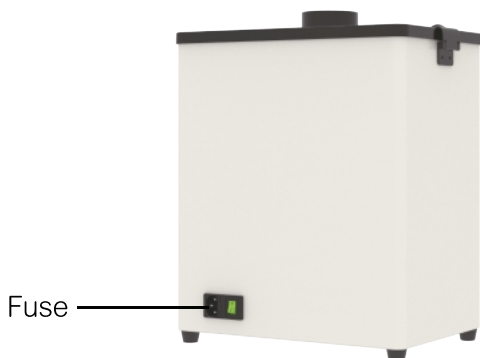
Install the spare fuse onto the clip in the fuse slot.



Install the fuse slot back into the three-in-one



The fuse replacement is complete.



# Trouble shooting

**Important Note: Before checking and repairing the equipment, please ensure the power is completely turned off and unplugged!**

Issue: Low air volume and reduced suction force while the equipment is still operating.

Cause: Blockage in the air inlet or saturated filter element causing obstructions.

Check: Turn off the power supply, open the top cover, check for any objects obstructing the air inlet, and inspect the air outlet for blockages.

Solution: If no issues are found after inspection, restart the machine. If the air volume remains low, replace the filter element.

Issue: Automatic shutdown of the equipment shortly after starting, with repeated occurrence of the above symptom.

Cause: Blockage in the internal airflow, resulting in high resistance. Excessive current is consumed by the fan during startup, triggering automatic shutdown to protect the system.

Check: Turn off the power supply, open the top cover, and check for foreign objects obstructing the air inlet. After inspection, set the gear to the minimum position, then restart the equipment and adjust the gear to the appropriate air volume.

Please read this instruction manual carefully before use and keep it in a safe place for future reference.

